

A young boy with a joyful expression looks upwards against a dark, starry background. The scene is decorated with white and blue orbital lines, colorful stars, and white line-art illustrations of a space shuttle, an astronaut, and a globe. A yellow pencil is positioned near the boy's head, pointing towards the stars. The text 'A BRIGHTER FUTURE BEGINS TODAY.' is written in large, bold, yellow capital letters on the left side of the image.

**A BRIGHTER
FUTURE
BEGINS TODAY.**

The logo for Henrico Education Foundation, featuring a white graduation cap icon to the left of the text.

**Henrico
EDUCATION
Foundation**

Empowering Teachers
Inspiring Students
Engaging Communities



The future of our students depends on great schools and great schools depend on you

Henrico County is known for its commitment to quality instruction. Maintaining excellence isn't easy and requires a strong vision, unwavering commitment and continuous improvement.

As the modern classroom constantly evolves, educational standards are updated and the arrival of new technologies requires a fresh approach to student instruction.

It takes the entire community to create high-performing schools. When you make a contribution to the Henrico Education Foundation (HEF), you are providing essential learning opportunities that go beyond the traditional classroom. **The need for your support has never been greater.**



Is HEF part of the school system?

No, HEF is an independent, nonprofit, community-based charitable organization supporting all Henrico County public schools.



Don't my taxes cover everything our schools need?

While Henrico County's tax dollars provide strong support for programs, facilities and staffing, HEF's Innovative Grants Program is the only funding source outside of the county budget for designing, testing and implementing new approaches to instruction.



Success begins here

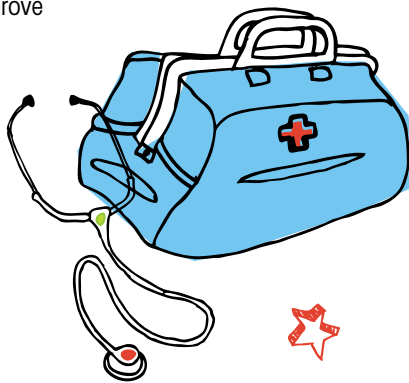
HEF strives to ensure every student in our community succeeds in both learning and life. For 25 years, we have played a critical role in public education by funding:

- teacher training
- programs to increase on-time graduation
- literacy instruction
- innovative classroom grants
- STEM (Science Technology Engineering and Mathematics) education
- scholarships for financially disadvantaged students to attend field trips, academic competitions and enrichment programs
- academic enrichment and extended learning programs to provide students with a firm foundation for success
- and much more.

We are innovators working in partnership with parents, teachers and administrators, continually identifying and developing initiatives that enhance learning, support schools and help every child succeed. Our mission is to strengthen public education by advancing innovative programs and initiatives designed to improve student achievement.

Your financial support is vital in providing the resources our students and teachers need for continued success.

Collectively, we make a difference.



25 years of making a difference

Giving to HEF is one of the most effective ways to support our children's schools and strengthen public education in Henrico County.

This year, HEF is celebrating its silver anniversary. Over the last 25 years, the foundation has provided more than \$4 million in direct funding to students, teachers and classrooms across Henrico County. Your generous donation is life changing. Help us continue the tradition of excellence in education and make your gift to HEF today.



How is HEF funded?

The funds raised by HEF do *not* come from large endowments. They come from people just like you who value strong public schools in Henrico County.



**PLEASE MAIL
YOUR GIFT TO:**

**Henrico Education
Foundation
P.O. Box 31413
Henrico, VA 23294**

**OR DONATE ONLINE AT:
HenricoGives.org**

**QUESTIONS?
PLEASE CALL US AT:
(804) 652-3869**

MY GIFT OR PLEDGE

Simply return this form by mail or donate online at **HenricoGives.org**. All contributions are tax deductible.

NAME

ADDRESS

CITY / STATE / ZIP

PHONE

EMAIL

GIVING OPTIONS:

- I am making a one-time gift of \$ _____
- I pledge \$ _____ to be fulfilled by (date) _____
- Please bill me on (date) _____
- I want to join HEF's Advocates for Education giving club and will make a **monthly** gift of:
 - \$25 \$50 \$100 \$150 other \$ _____

PAYMENT OPTIONS:

- My check is enclosed. (Please make payable to HEF.)
- Debit my checking account each month in the amount listed above. (Please send me the forms to begin automatic drafts.)
- Please charge my: Visa MasterCard AMEX Discover

--	--	--	--

CARD NUMBER

--	--	--	--

EXP DATE

--	--	--	--

SECURITY CODE

SIGNATURE

ENDOWMENT: I would like to make a lasting impact by adding an additional gift to the **Dr. William C. Boshier Jr. Memorial Endowment Fund** to provide growing support.

- \$5 \$10 \$25 Other \$ _____



What are my options for giving to HEF?

HEF receives gifts from individuals, corporations and foundations. Donations may be made by check, credit card or gifts of stock or securities. Many individuals choose to make a monthly gift or pledge that can be fulfilled at a later date. Donations are fully tax deductible and can also be made online at HenricoGives.org.

Make your gift to HEF today.

PLEASE MAIL YOUR GIFT TO:

**Henrico Education
Foundation
P.O. Box 31413
Henrico, VA 23294**

OR DONATE ONLINE AT: HenricoGives.org

**QUESTIONS?
PLEASE CALL US AT:
(804) 652-3869**

HEF GIVING LEVELS

\$10,000 or more	Visionary
\$5,000 – \$9,999	Innovator
\$2,500 – \$4,999	Champion
\$1,000 – \$2,499	Leader
\$500 – \$999	Investor
\$200 – \$499	Partner
\$1 – \$199	Advocate

HEF BOARD OF DIRECTORS

Veronica Hinckle,
President

John Delandro,
Vice President

Jeff Robinson,
Treasurer

Michael McCullough,
Secretary

Betsy Beamer

Gerald Britt

Tamara Charity-Brown

Chris Coplan

Alison Crehore

Monica Brinkley Davis

Meg Graham

Stephen Halsey

Delphine Hartsel

Joe Mengedoth

Bob Michie

Robert Nomberg

Anne Poates

Jack Reasor

Savon Sampson

Anne Schaffer

Wes Simon

Russell Singer

Randy Sullivan

Diane Tidwell

Randall Welch

HEF STAFF

Mike Taylor, Executive Director

Jay Shively, Chief Development Officer

Paula Roop, Program Officer - Educational Initiatives

Darryl Williams, Program Officer - Community Learning Center

Courtney Baytop, Operations Assistant

Natasha Hatton, Finance Assistant